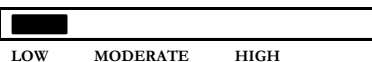


RISK CATEGORY



FUND INVESTMENT OBJECTIVE

1. The fund aims to provide capital preservation and generating reasonable return by investing in Shari'ah compliant instruments with a low level of risk exposure while maintaining the adequate liquidity for the fund.
2. The fund invests in short term Murabaha (Money Market Deals) in Saudi Riyal and other GCC & Major currencies.
3. The fund may invest in Sukuk and other Shari'ah Compliant Products and can invest in other funds.

GENERAL INFORMATION

Category: Capital Preservation
 Asset Class: Trade Finance Local
 Sub-Category: Shriah-Compliant
 Base Currency: Saudi Arabia Riyal
 Unit Price: 11.281612
 No. of Units: 7,050,790.26
 Net Asset Value: 79,544,279.03
 Inception Date: 7/22/2009
 Benchmark: 3 Months SAIBOR

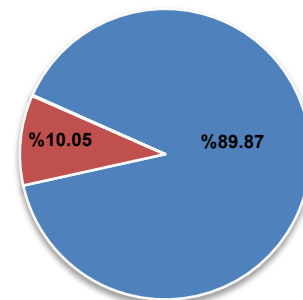
FUND STATISTICS

3 Years Standard De: 0.06%
 Sharpe Ratio: 2.15
 Number of Up Months SI: 69
 Number of Down Months SI: 3

ASSET ALLOCATION

Murabaha	89.87%	Cash	0.08%
Sukuk	10.05%		

■ Murabaha ■ Sukuk ■ Cash



GEOGRAPHICAL ASSET ALLOCATION

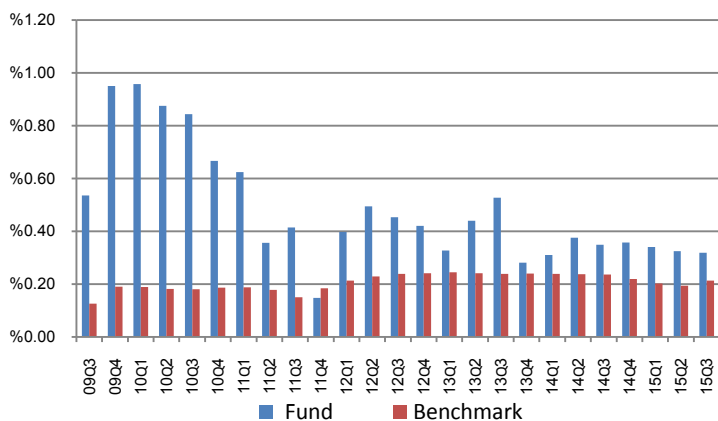
Country	Investment	Allocation
Saudi Arabia	45,965,569	57.8%
Qatar	33,600,000	42.2%
Total	79,565,569	100.0%

CUMULATIVE RETURNS %

Particulars	1 Month	3 Months	6 Months	9 Months
Fund	0.10%	0.32%	0.64%	0.99%
Benchmark	0.07%	0.21%	0.41%	0.61%
Difference	0.02%	0.11%	0.24%	0.38%

Particulars	12 Months	Quarter till Date	Year till Date	Since Inception
Fund	1.35%	0.32%	0.99%	12.82%
Benchmark	0.83%	0.21%	0.61%	5.32%
Difference	0.52%	0.11%	0.38%	7.50%

Fund vs Benchmark Performance Quarterly Basis



The Investor Murabaha Fund's Unit price rose to 11.28 by end of Septmebr 2015, yielding a since inception return of 12.82% compared to Fund benchmark (SAR 3-month SAIBOR) return of 5.32%. The Investor Murabaha Fund has outperformed the benchmark by 38 basis points on year-to-date basis and by 7.50% since inception. Performance of fund has been boosted by applying new investment strategy which allow the fund to invest in sukuk market offering competitive profit rates with take in consideratoin associated-risk. It is noteworthy that the changes in interest rates in the Kingdom of Saudi Arabia are heavily influenced by changes of US prime-rate which is still remain low. Thus, Fund Manager's strategy is based on active monitoring of US interest rate environment and active maturity and yield quassi-management and Global economy has played important effect on rates especially today with China econmy growth outlook and global economy.

Disclaimer: The information contained herein is for informational purposes only and should not be construed as an offer to sell/purchase, a solicitation of an offer to buy, or a recommendation for the units of The Investor Mutual Fund. Past performance of the Fund does not indicate the future performance of the Schemes and may not necessarily provide a basis of comparison with other investments. Mutual Funds investments are subject to market risks and there can be no assurance or guarantee that the Scheme's objective will be achieved and the NAV of the Schemes may go up or down depending upon the factors and forces affecting the securities market. The report contain statements and statistics, that have been obtained from the source believed to be reliable, however, The Investor for Securities does not guarantee its accuracy or completeness. This document is not for distribution to the general public. It is directed at persons authorized to invest in the Fund and residing in jurisdictions where the Fund is authorized for distribution or where no such authorization is required. The information contained herein should not be altered in any way, transmitted to, copied or distributed, in part or in whole, to any other person or to the media or reproduced in any form, without prior written consent of The Investor For Securities.